

PICO CELL Patch Antenna

PCA08 - PCG09 Series

Version #2.0

Features

- Volume injection modeling to attain Low Cost
- Indoor or Outdoor Use
- Weatherproof and Corrosion Resistant
- Fast and Easy Installation & Included Swivel Mount
- Choice of Polarization Frequency
- Articulating designing achieved high performance



Description

SmartAnt's Pico Cell antennas furnish high performance in an attractive package the discretely blends into indoor and outdoor environments. Our unique pivot mount swivels designed to steer the main lobe horizontally degree, and locks to enable precise positioning. Our circularly polarized models eliminate the need for spatial diversity antenna and help overcome performance-degrading multi-path effects. We can incorporate for customer request to modify the connector options, tilts positioning, and mounting options.

Application

Extend Cellular AMPS, GSM & IS-95 CDMA / Wireless Coverage Indoors

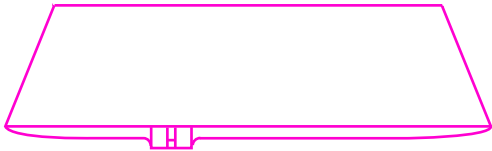
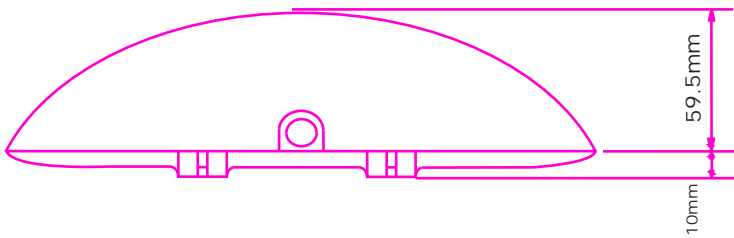
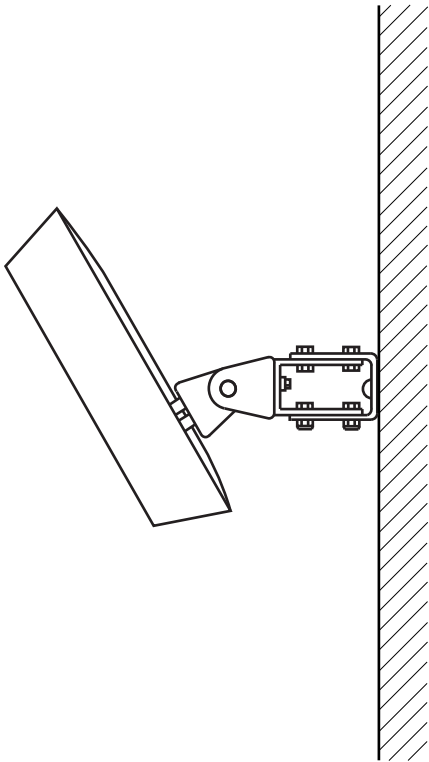
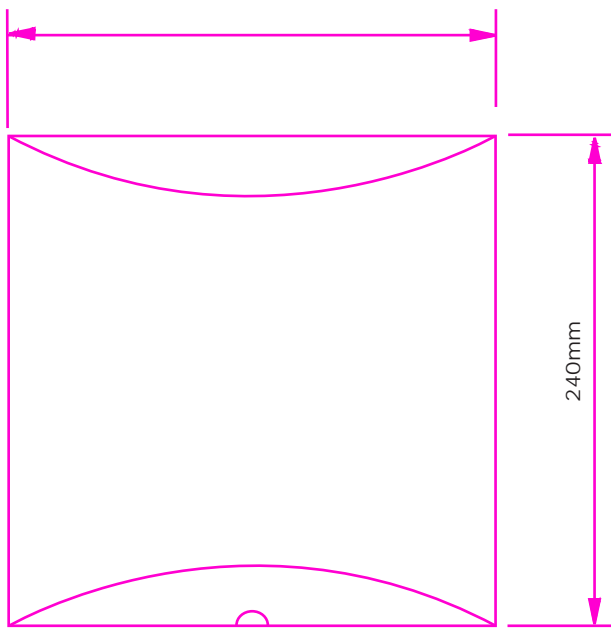
Extend PBX / Wireless PBX Within Targeted Zones

Electrical Specification:

Model Number	Freq. Range MHz	Gain dBi	3dB Beamwidth, deg.		F/B/dB	VSWR	Connector
			Az/H-plane	El/E-Plane			
PCA08-07008-BFL	820 - 900	8.5	70	65	15	1.3:1	N-f
PCG09-07008-BFL	860 - 960	8.5	70	65	15	1.3:1	N-f

Specifications Subject to Change Without Notice

Dimensions (mm)



General specification:

Power Handling: 50 watts / CW

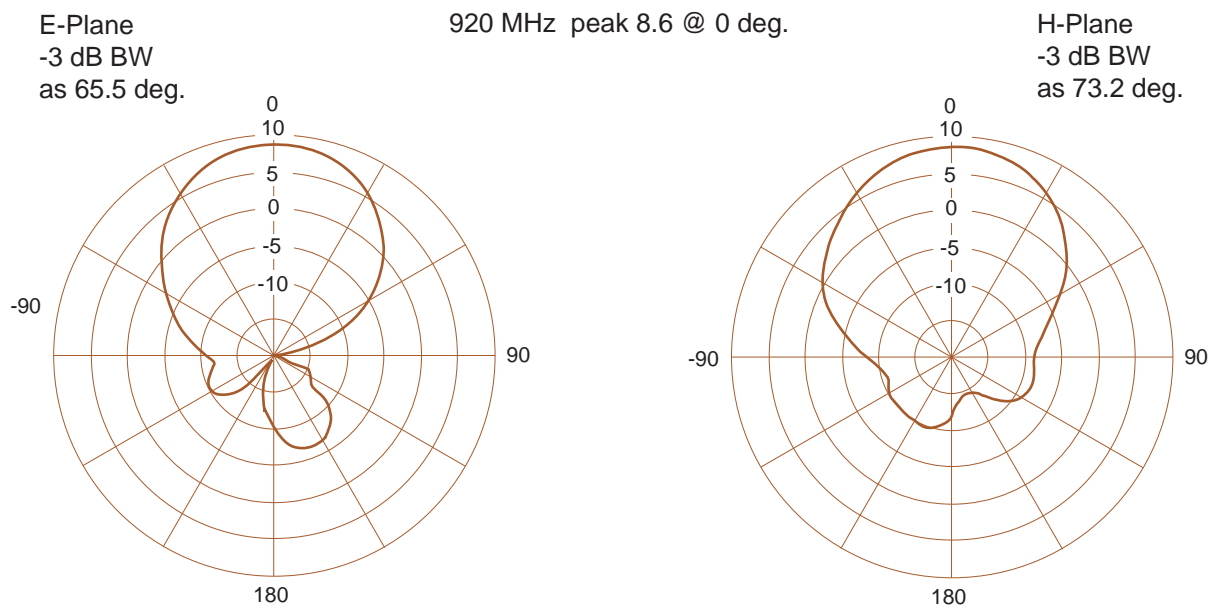
Polarization: Linear type

Impedance: 50 Ohms

Mounting: Bracket Kits. That material as Kylan Planting/ Iron #SS41

Cable: RG-58/U; 240mm.

Radiation Pattern: #PCG09-07008-BFL



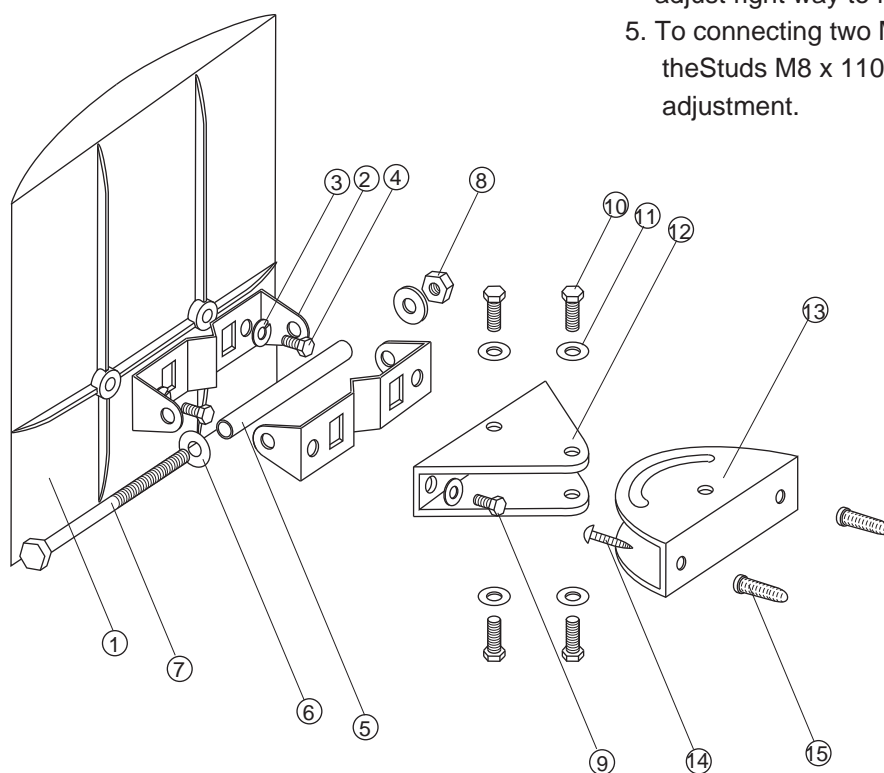
PICO CELL Patch Antenna for AMPS 800/GSM 900

Version 1.0

Mounting Configuration

Installation note

1. Inserting the M8 x 12 screw into fixed the antenna body.
2. Inserting the Tapping screw TS4 to fixed the wall.
3. To connecting the M type Prop Stand and Triangle Stand, please inserting the Studs M8 x 16 to fixed with Nuts M8 two set.
4. To connecting the Triangle Stand with Mian Stand, please inserting the Studs M6 x 12; two pcs and adjust right way to fixed.
5. To connecting two M type Prop Stands to inserting the Studs M8 x 110 to fixed antennna down-tilt adjustment.



- | | |
|----------------------------|------------------------------|
| ① Antenna Body | ⑨ M8X16 screw - 2 pcs |
| ② M-type Stand -2 pcs | ⑩ M6X12 screw - 4 pcs |
| ③ M8 Spring washer - 2 pcs | ⑪ M6 washer - 4 pcs |
| ④ M8X12 screw - 2 pcs | ⑫ Triangle stand |
| ⑤ Steel tube -1 pcs | ⑬ Main stand |
| ⑥ M8 washer - 4 pcs | ⑭ Tapping screw - 2 pcs |
| ⑦ M8X110 screw - 1 pcs | ⑮ Plastic wall tiger - 2 pcs |
| ⑧ M8 nut - 3 pcs | |