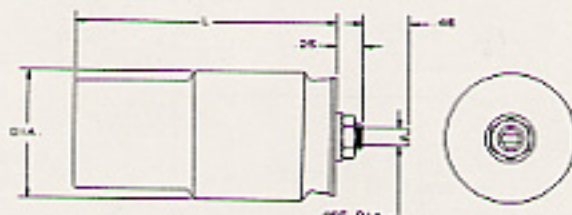


Screwdriver Adjust Non-Rotating Piston Series

RF Variable Capacitors High Voltage High Power

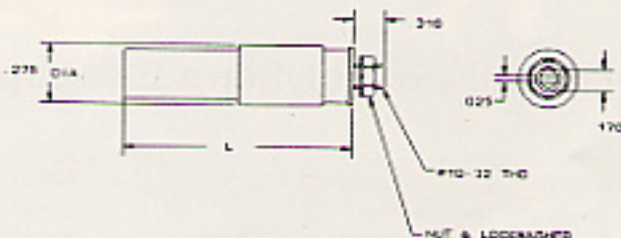
NRP Series



| PART NUMBER | Capacitance Range (pF) | Peak (kV) Working Volts | Peak (kV) Test Volts | Max. (RMS) Current (amps) | Dimensions/Inch (mm) | | Wt./Ounces (Approx.) |
|---------------------|------------------------|-------------------------|----------------------|---------------------------|----------------------|-----------------|----------------------|
| | | | | | L(+/- .020") | DIA.(+/- .020") | |
| NRP - VC5 - 10 - * | 0.8 - 5 | 5 | 10 | 2.30 | 1.560(39.6) | 0.500(12.7) | 0.40 |
| NRP - VC10 - 12 - * | 0.8 - 10 | 6 | 12 | 3.60 | 1.830(46.5) | 0.625(15.9) | 0.80 |
| NRP - VC25 - 6 - * | 5 - 25 | 3 | 6 | 5.70 | 1.620(41.1) | 0.910(23.1) | 1.25 |
| NRP - VC25 - 6B - * | 5 - 25 | 3 | 6 | 4.20 | 1.620(41.1) | 0.625(15.9) | 1.25 |
| NRP - VC25 - 15 - * | 5 - 25 | 10 | 15 | 7.20 | 1.770(45.0) | 1.125(28.6) | 2.00 |
| NRP - VC30 - 6 - * | 3 - 30 | 3 | 6 | 10.00 | 2.250(57.2) | 1.500(38.1) | 4.00 |
| NRP - VC50 - 6 - * | 5 - 50 | 3 | 6 | 12.50 | 2.250(57.2) | 1.500(38.1) | 3.50 |
| NRP - VC50 - 15 - * | 5 - 50 | 10 | 15 | 15.00 | 2.515(63.9) | 1.625(41.3) | 4.00 |
| NRP - VC70 - 15 - * | 3 - 70 | 10 | 15 | 20.00 | 3.250(82.6) | 1.625(41.3) | 4.50 |
| NRP - VC85 - 6 - * | 5 - 85 | 3 | 6 | 20.00 | 3.250(82.6) | 1.500(38.1) | 4.10 |
| NRP - VC90 - 8 - * | 5 - 90 | 3 | 6 | 10.00 | 2.780(70.6) | 1.050(26.7) | 3.50 |
| NRP - VC100 - 6 - * | 5 - 100 | 3 | 6 | 25.00 | 3.525(89.5) | 1.500(38.1) | 6.00 |
| NRP - VC125 - 6 - * | 5 - 125 | 3 | 6 | 28.00 | 3.835(97.4) | 1.500(38.1) | 8.00 |

* See lead code on option table

Note: NRP Series - mounting dimensions: 1/4" diameter "D" hole. Hardware: 1/4"-32 hex nut and internal tooth lockwasher. Mounting flange is at the bottom of the capacitor.



TTRP Series

| PART NUMBER | Capacitance Range (pF) | Peak (kV) Working Volts | Peak (kV) Test Volts | Max. (RMS) Current (amps) | Dimensions/Inch (mm) | | Wt./Ounces (Approx.) |
|----------------------|------------------------|-------------------------|----------------------|---------------------------|----------------------|-----------------|----------------------|
| | | | | | L(+/- .020") | DIA.(+/- .020") | |
| TTRNP - VC8 - 2 - * | 0.8 - 8 | 1 | 2 | 0.60 | 0.550(14.0) | 0.275(7.0) | 0.07 |
| TTRNP - VC10 - 2 - * | 1 - 10 | 1 | 2 | 0.80 | 0.750(19.1) | 0.275(7.0) | 0.10 |
| TTRNP - VC16 - 2 - * | 2 - 16 | 1 | 2 | 1.00 | 0.950(24.1) | 0.275(7.0) | 0.13 |
| TTRNP - VC20 - 2 - * | 2 - 20 | 1 | 2 | 1.20 | 1.050(26.7) | 0.275(7.0) | 0.14 |
| TTRNP - VC25 - 2 - * | 2 - 25 | 1 | 2 | 1.40 | 1.350(34.3) | 0.275(7.0) | 0.15 |
| TTRNP - VC30 - 2 - * | 3 - 30 | 1 | 2 | 1.60 | 1.550(39.4) | 0.275(7.0) | 0.18 |
| TTRNP - VC35 - 2 - * | 3 - 35 | 1 | 2 | 1.80 | 1.750(44.5) | 0.275(7.0) | 0.20 |
| TTRNP - VC40 - 2 - * | 4 - 40 | 1 | 2 | 2.00 | 1.950(49.5) | 0.275(7.0) | 0.23 |
| TTRNP - VC45 - 2 - * | 5 - 45 | 1 | 2 | 2.40 | 2.350(59.7) | 0.275(7.0) | 0.29 |
| TTRNP - VC50 - 2 - * | 5 - 50 | 1 | 2 | 2.60 | 2.550(64.8) | 0.275(7.0) | 0.32 |

* See lead code on option table

Note: TTRNP Series- mounting dimensions: 1/4" diameter "D" hole. Hardware: 10-32 hex nut and internal tooth lockwasher. Mounting flange is at the bottom of the capacitor.

Drive Shaft/Mounting Option Table

| Option | Description |
|--------|---|
| A | Extension Shaft: .125" dia. x 3" long delrin rod with .500" dia. x .250" thick knurled delrin knob. |
| B | Coupling Adapter: .375" O.D. x .170" I.D. (female) x .500" long to .250" dia. (male). Overall length is 1". (Has set screws). |
| C | Coupling Adapter: .437" O.D. x .250" I.D. (female) to 11/64" dia. (female). Overall length is 1". (Has set screws). |
| 94 | Anode Terminal: .375", 10 - 32 UNC - 2A |

Lead Option Table

| Lead Option | Description |
|-------------|--|
| 05 | without lead options |
| 16 | 3" wire, top only - in line with flat |
| 26 | 3" wire, top and bottom - in line with the flat |
| 36 | 1 - 1/2" strap, top only - in line with the flat |
| 66 | 3" wire, top only - opposite flat |
| 76 | 3" wire, top and bottom - opposite flat |
| 86 | 1 - 1/2" strap, top only - opposite flat |